



Kuali OLE: A Next-Generation ILS Partnership

Robert H. McDonald

Associate Dean for Library Technologies-Indiana University

Director Kuali OLE Community Development

@mcdonald | robert@kuali.org | @kualirole

<http://ole.kuali.org>



What is Kuali OLE?

Kuali OLE (Open Library Environment) is a community source next-generation library management system developed through a partnership of research libraries with the Andrew W. Mellon Foundation.

OLE is building a next-generation library system meeting the following requirements:

- Flexibility in design
- Community ownership based on an open source license
- Service-Oriented Architecture with a modular framework
- Enterprise-level integration
- Efficiency in ability meet both current and future business needs
- Sustainability in design to allow for the evolution of software, hardware, and mission



What is Kuali OLE?

The
Andrew W. Mellon
Foundation

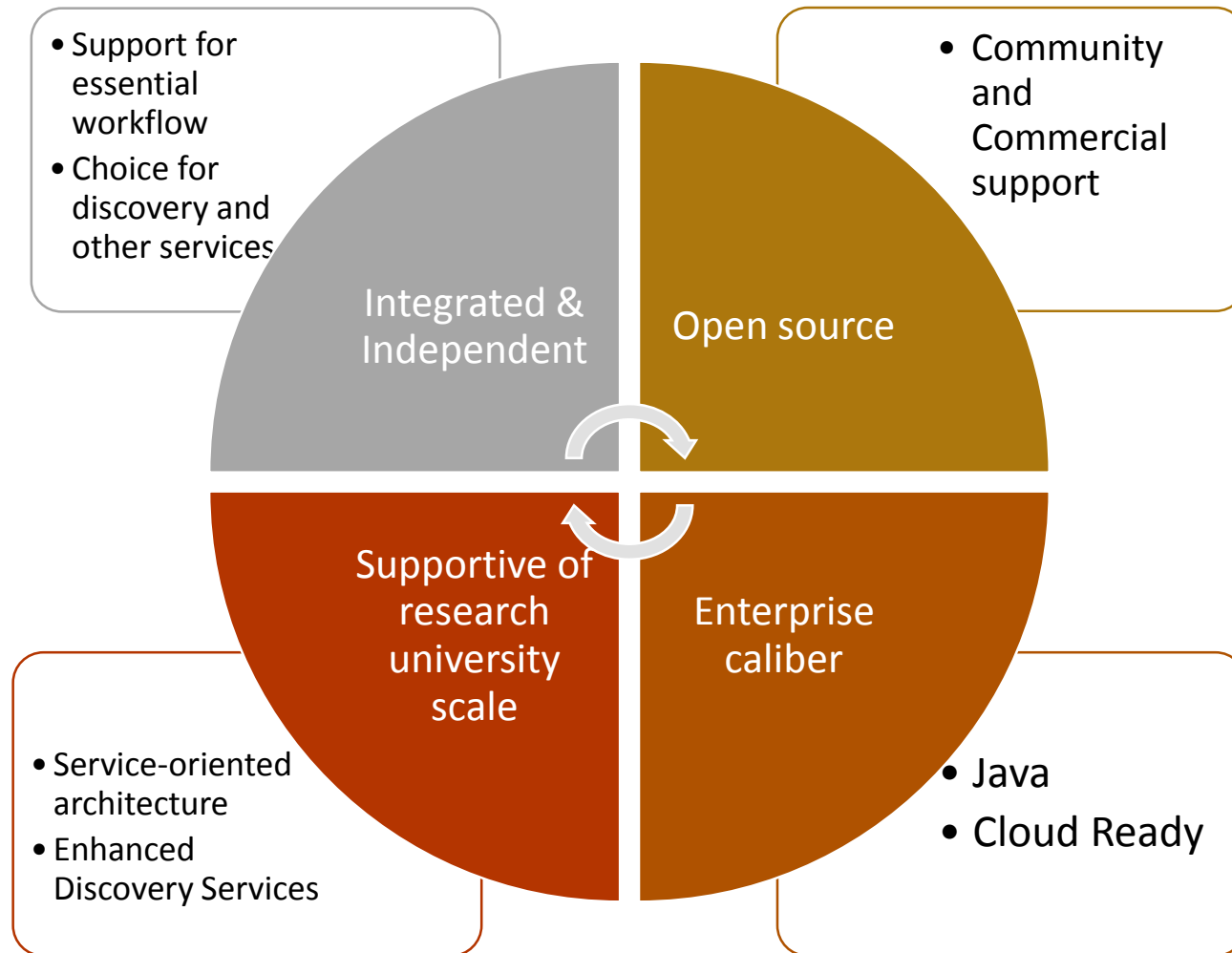
Kuali OLE (Open Library Environment) is also an open partnership among academic libraries to provide for our evolving needs.



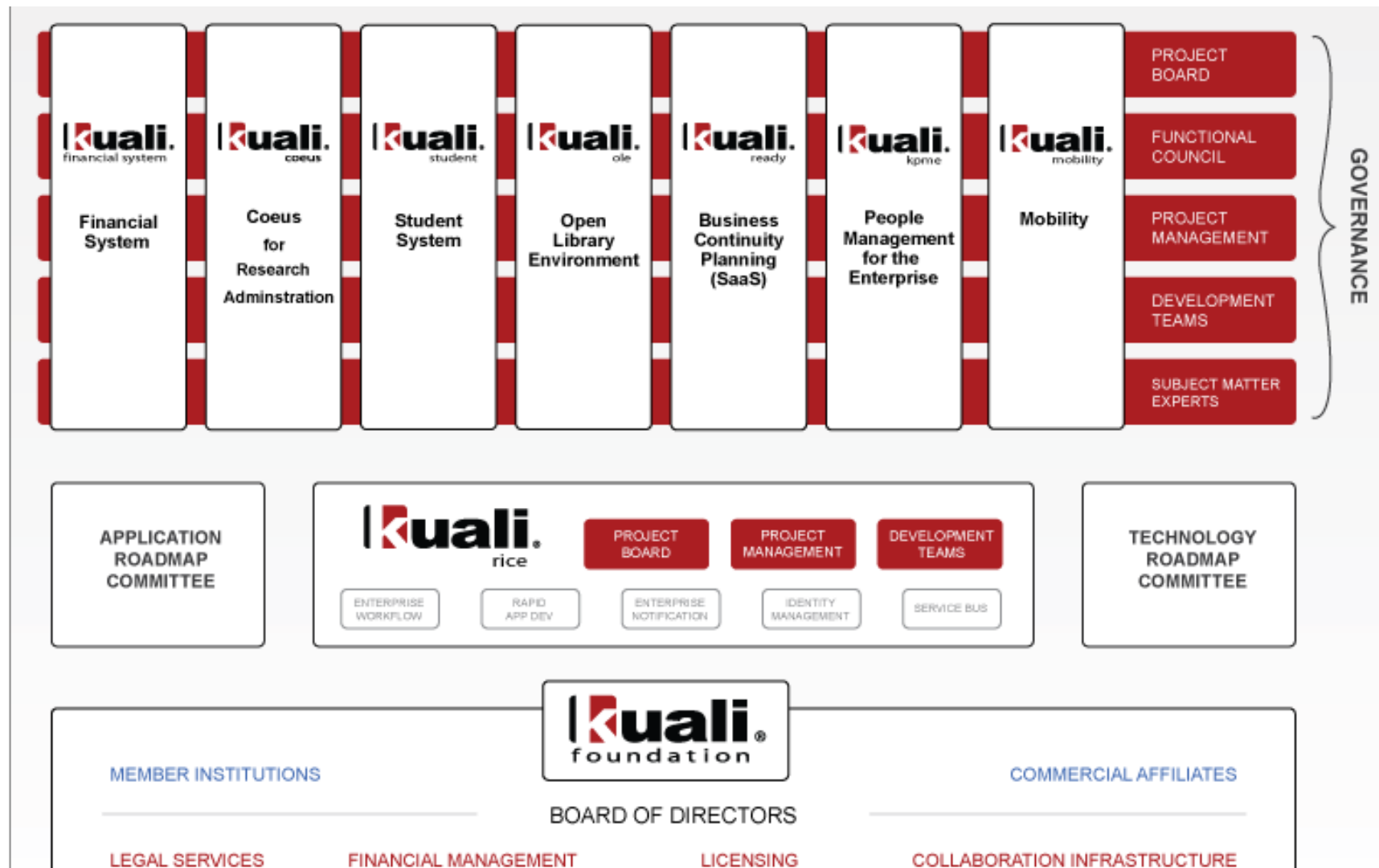
OLE: Participation and Sustainability



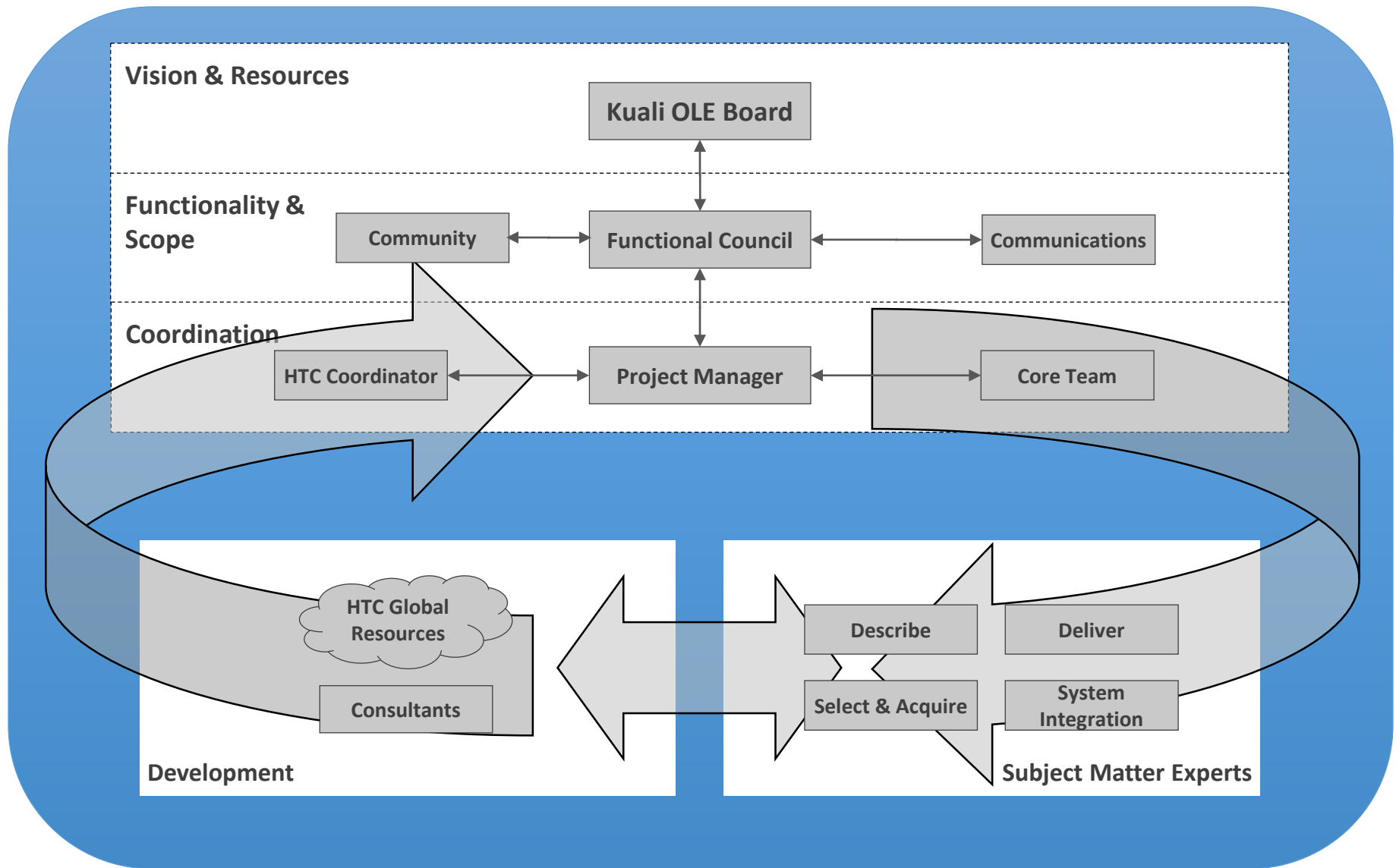
Kuali OLE Characteristics



The Kuali Foundation and OLE



Kuali OLE Organization



OLE Collaborators



The Andrew W. Mellon Foundation

Kuali : the newest addition to EBSCO's suite of ILS Partners

EBSCO and Kuali form a tight relationship to offer seamless interaction between the **leading discovery solution**—*EBSCO Discovery Service*—and the **high-end, open source ILS**—Kuali OLE.



EBSCO has been a KCA since March 2013



Supported by Co-Conference Presentations on Discovery



OLE Partners have worked directly on EDS/OLE Interoperability



Sponsorship for OLE Events
Kuali Days & Kuali Days UK



Partnership synergy is EDS + Backend Open Source Library Management System



Advancing discovery capabilities within the Kuali Community.

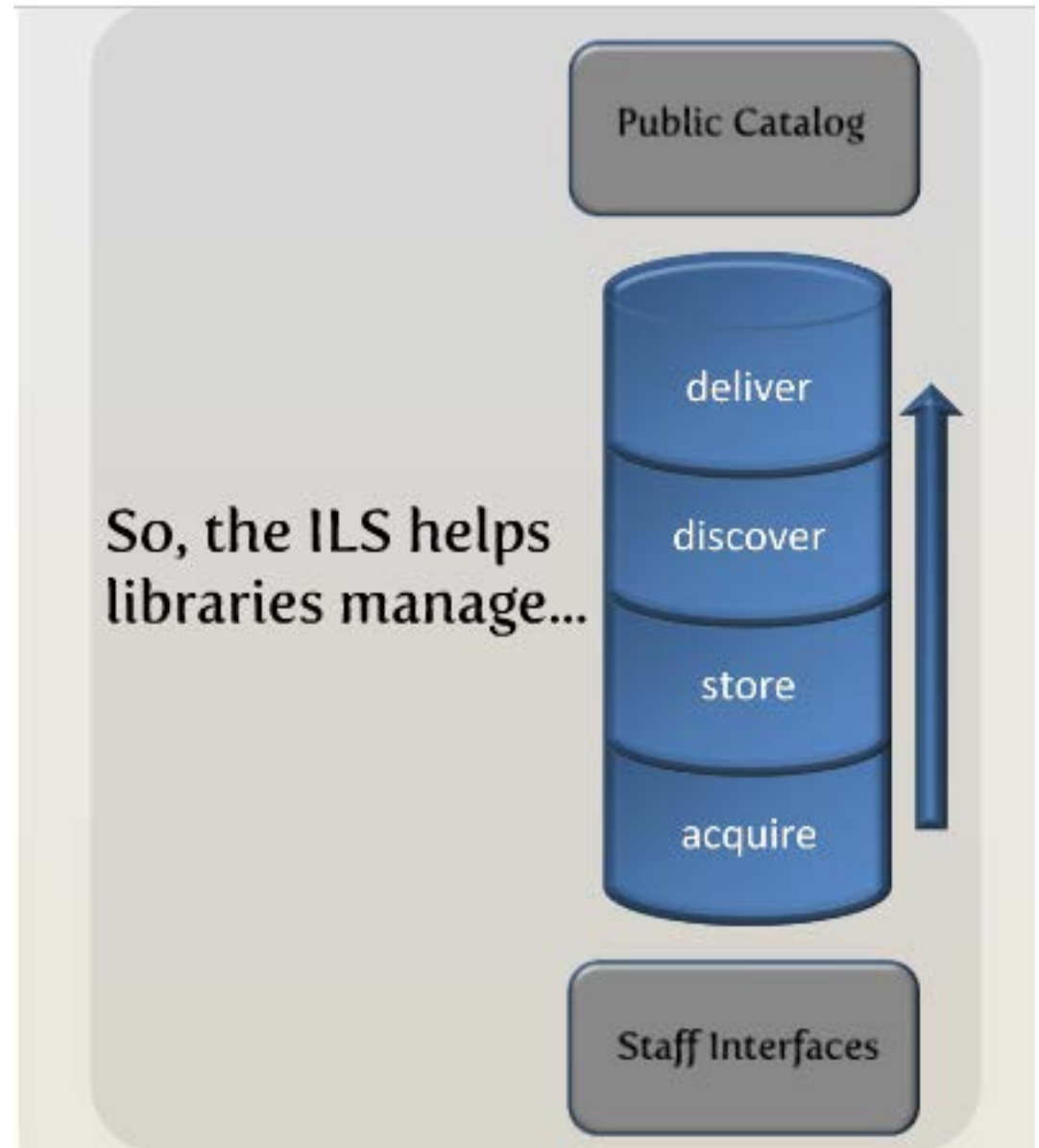


CARL Next Generation ILS Conference
April 4, 2014

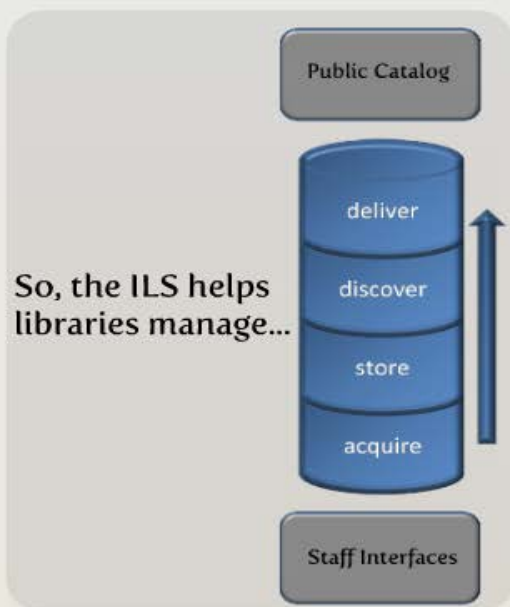
Expected release 2014
www.ebsco.com



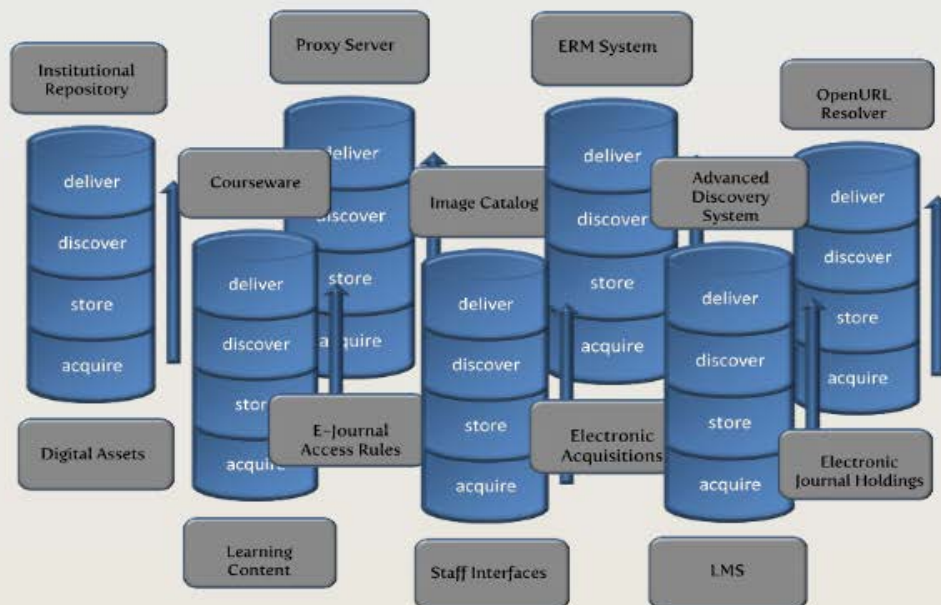
The Current ILS



The Next Generation Library Eco-System



Only a part of the total workflow ...



The Global Open Knowledgebase (GOKb)



- Andrew W. Mellon Grant, April 2012-March 2013
- Knowledgebase for Kuali OLE
- Build a Global Open Knowledgebase (GOKb) that will be community maintained
- Focus on data management and integration services



GOKb Key Deliverables



- Open knowledgebase using a standards-based architecture, CC0 license
- Enhanced global data elements
- APIs to interact with data—emphasis on ingest and maintenance



GOKb, KB+ and Kuali OLE

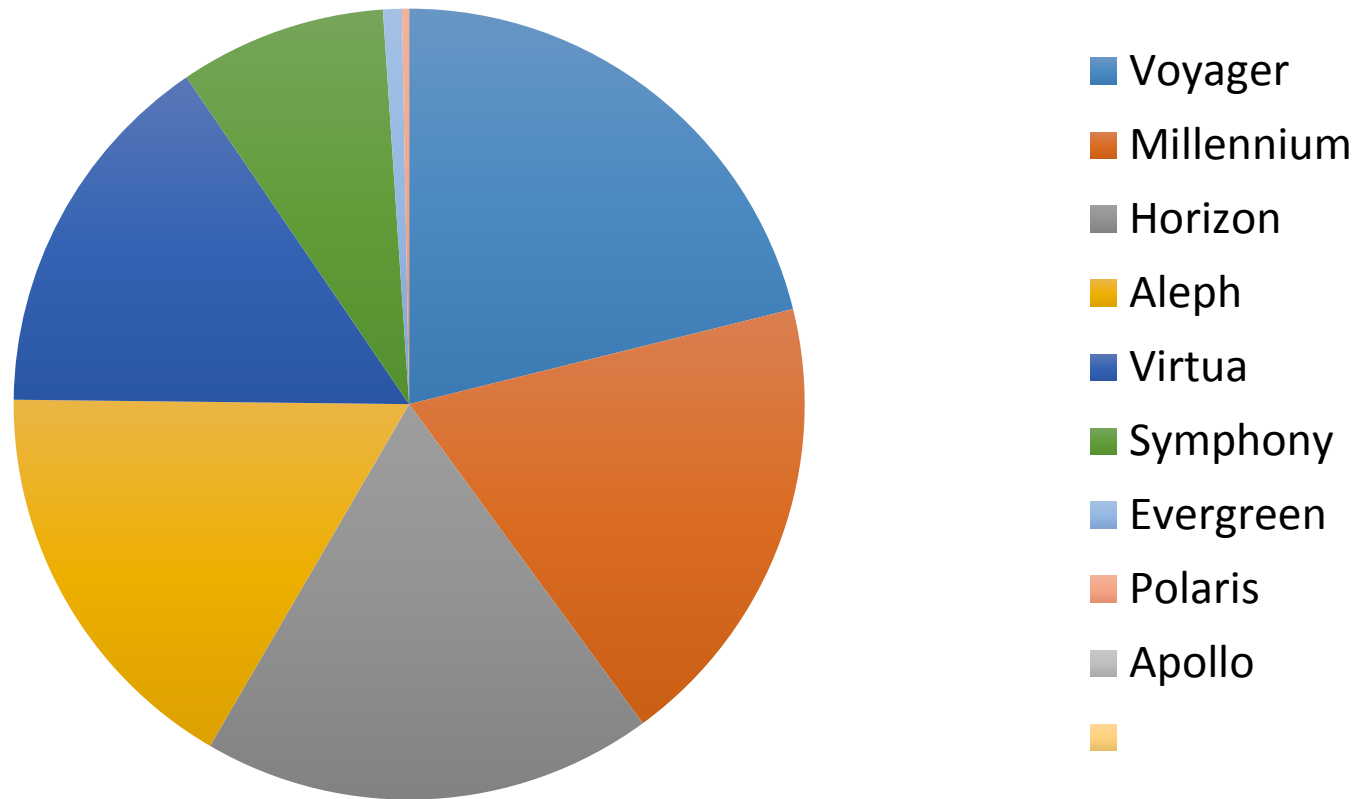


- Kuali OLE building a community source library management system
 - Mellon commissioned a feasibility study, 2008-9
 - Funded build project, 2010-14 : \$4 million from Mellon, \$4 million from partners
- GOKb Version 1.0 – basic functionality of GOKb by 2013.



In Transition: The Current Library Management System Landscape

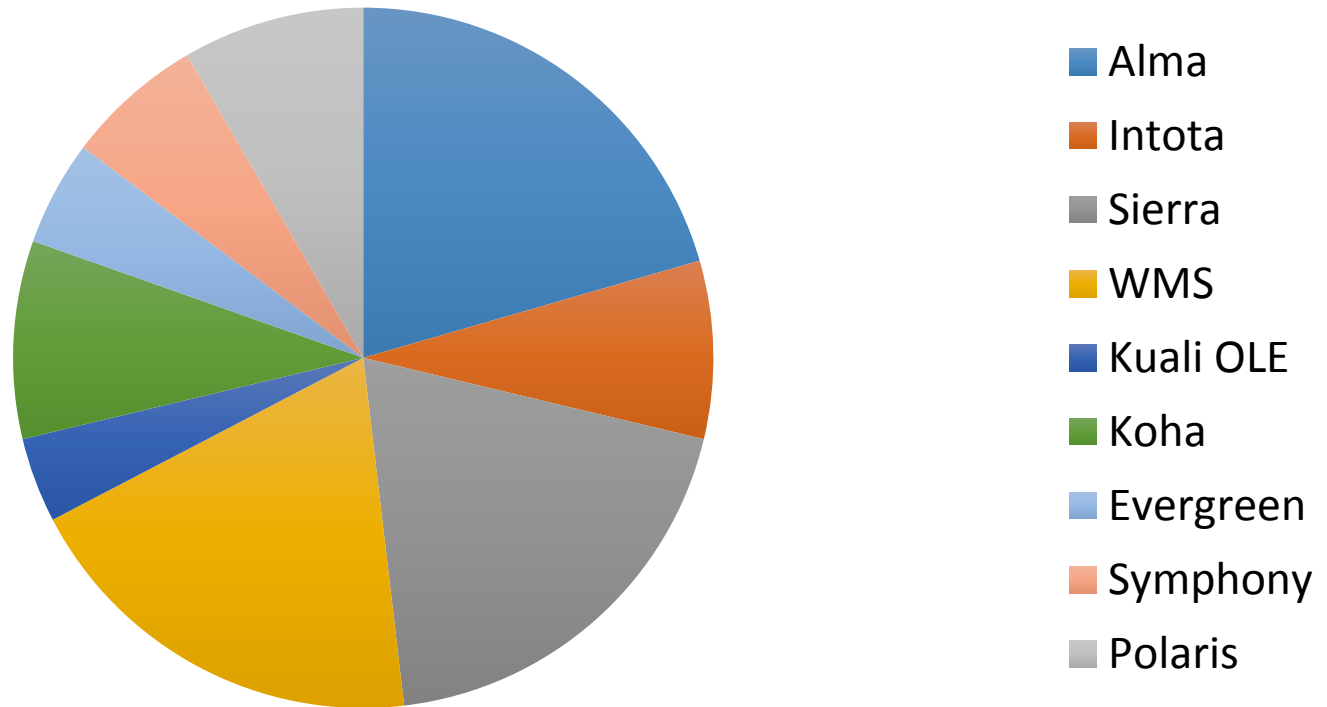
Systems of Libraries Considering Migration 2013



- Perceptions 2013: An International Survey of Library Automation – Marshall Breeding <http://www.librarytechnology.org/perceptions2013.pl>

In Transition: The New Library Management System Landscape

Candidate Systems Considered for 2013



- Perceptions 2013: An International Survey of Library Automation – Marshall Breeding <http://www.librarytechnology.org/perceptions2013.pl>

Key Kuali OLE Release Information

- April 2014 1.5
 - Complete baseline ILS: functionality across 4 of 5 modules
 - First upgradeable release
- 4Q 2014: 2.0
 - Electronic Resource Management (GOKb e-Resource knowledge base integration)
 - Critical features for the next wave of partner implementations



Kuali OLE 1.5 Interface



The screenshot displays the Kuali OLE 1.5 web interface. At the top left is the Kuali logo with the tagline "open library environment". To the right of the logo are navigation tabs: "Deliver", "Describe", "Select/Acquire", "Licensing", and "Admin". Further right, the text "OLE Financial System :: 1.5.0-M1-r16094 :: 2013-12-19 12:33" is visible. Below the navigation tabs is a yellow bar containing "action list" and "doc search" buttons on the left, and "Logged in User: ole-khuntley" on the right. The main content area is divided into three columns. The left column has two sections: "Circulation" with links for "Loan", "Return", "Request", "Request Re-order", and "View Item Bill"; and "Circulation Admin" with links for "Circulation Desk", "Circulation Desk Mapping", "Fixed Due Date", "Request Type", "Barcode Status", "Calendar Exception Type", "Calendar Group", and "Calendar". The middle column is empty. The right column has two sections: "Patron" with links for "Patron", "Patron Bill", and "MyAccount"; and "Patron Admin" with links for "Patron Load Reports", "Patron Merge", "Patron Type", "Patron Source", "Statistical Category", "Address Source", "Fee Type", "Payment Status", and "Fixed Due Date".

Kuali
open library environment

Deliver Describe Select/Acquire Licensing Admin

OLE Financial System :: 1.5.0-M1-r16094 :: 2013-12-19 12:33

action list doc search

Logged in User: ole-khuntley

Circulation

- [Loan](#)
- [Return](#)
- [Request](#)
- [Request Re-order](#)
- [View Item Bill](#)

Circulation Admin

- [Circulation Desk](#)
- [Circulation Desk Mapping](#)
- [Fixed Due Date](#)
- [Request Type](#)
- [Barcode Status](#)
- [Calendar Exception Type](#)
- [Calendar Group](#)
- [Calendar](#)

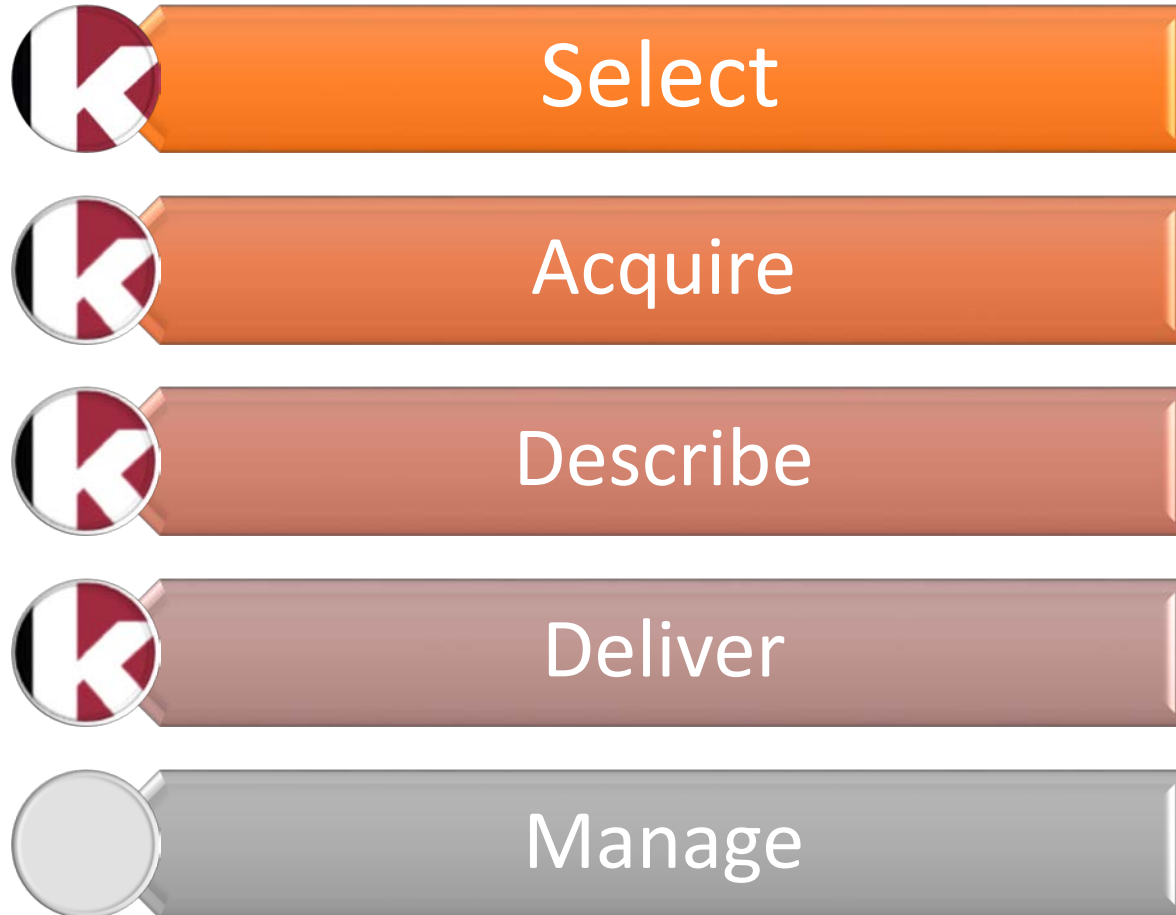
Patron

- [Patron](#)
- [Patron Bill](#)
- [MyAccount](#)

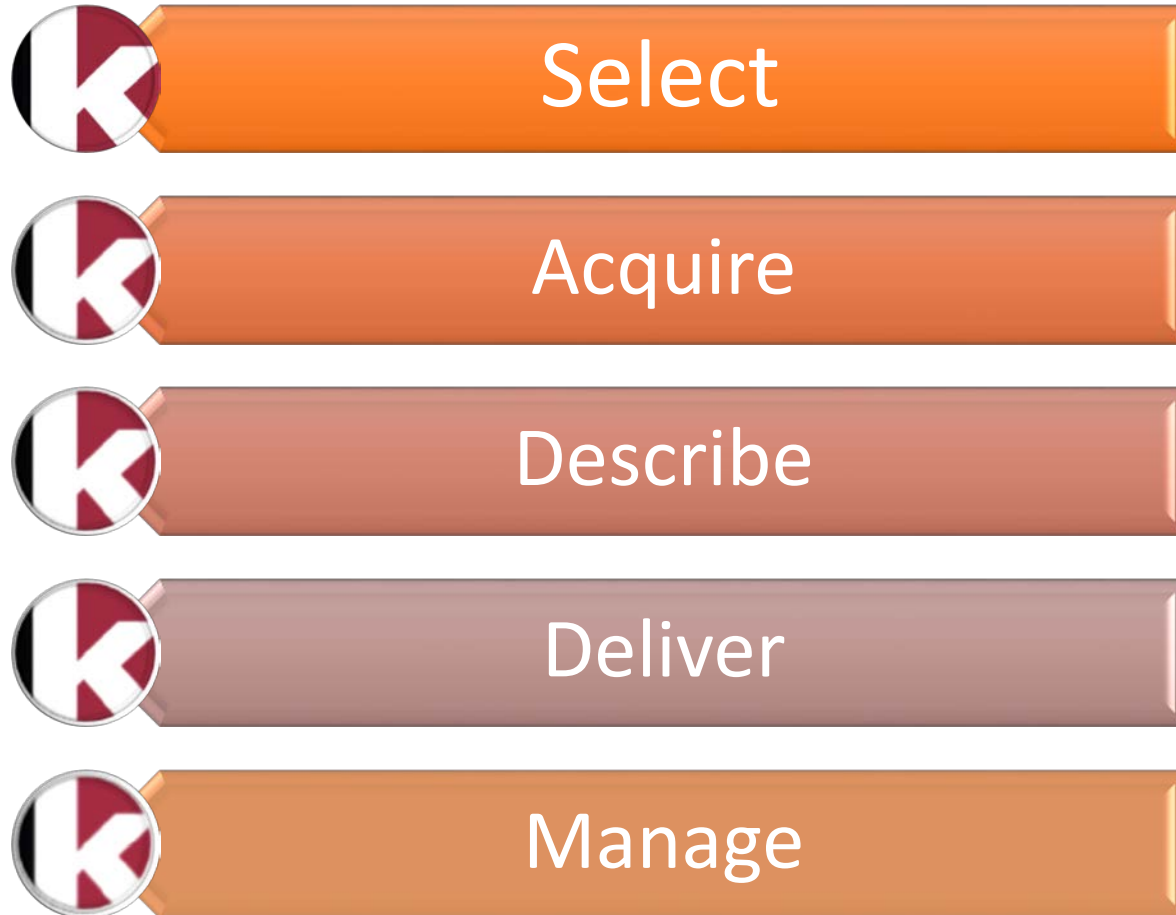
Patron Admin

- [Patron Load Reports](#)
- [Patron Merge](#)
- [Patron Type](#)
- [Patron Source](#)
- [Statistical Category](#)
- [Address Source](#)
- [Fee Type](#)
- [Payment Status](#)
- [Fixed Due Date](#)

Kuali OLE Release 1.5 (April 2014)



Kuali OLE Release 2.0: Q4 2014



OLE Partnership Implementation Timeline

Implementation Path for OLE Partners

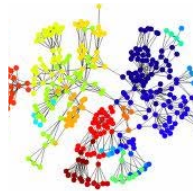


Characteristics of Kuali OLE Organizational Fit



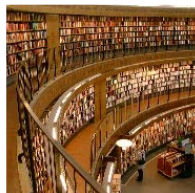
Technical Expertise

Collaborative
Community



Open Software –
Commercial
Support

Code Contributors



Code Implementers

• Build

- Active contributors to code base
- Significant development resources in house

• Borrow

- Capability to adopt and implement open source software
- Some development resources in house

• Buy

- Organizational requirement to purchase commercial software or software with commercial support
- Development and hosting support for OLE available via KCA Commercial Affiliates (HTC Global, Vivantech)

Kuali OLE A Rocky Mountain View

- What do I Install First?
 - Discovery Layer
 - Other Integrations
 - Financial
 - Student
 - Interlibrary Loan
 - ILL/Resource Sharing
 - Self-check
- What data do I Migrate?
 - Descriptive Metadata (MARC->MARCXML/DC)
 - Financial Data/Transactional Data
- What kind of expertise do I need to participate?
- Will it run in the cloud?
- Can I run it in the local CARL or University Infrastructure?



Implementation and Purchasing for Kuali OLE



OLE Hosted Option

- Using one of our two KCAs institutions will opt for a contract that supports complete implementation - analysis, installation, migration, configuration, maintenance & support of Kuali OLE.



OLE Local Option

- Using local resources an institution will implement Kuali OLE on local or private cloud infrastructure and would rely on the Kuali OLE community for support and enhancement.



OLE Hybrid Option

- Select your competencies for local migration and implementation and out-source critical areas of deployment or migration, to leverage your resources and manage costs using commodity priced cloud infrastructure.

TO RFP OR TO PROTOTYPE

DEVELOPING PROCUREMENT OPTIONS FOR COMMUNITY SOURCE SOFTWARE

Kuali Coeus 5.0 The "FE" Release

June 2012

Kuali Coeus 5.0 The "FE" Release

June 2012

Open Library Environment

Products Foundation Downloads Support Get Started

Overview

Architecture

License

Partners

Organization

Media

OVERVIEW OF OLE

Open Library Environment (OLE) An Extensible Service-Driven Library Management System

Kuali OLE is a new system designed to help libraries and other organizations manage and deliver their collections.

KUALI OLE

Kuali Open Library Environment (OLE)
Release 1.0 November 2013



OPEN AND TRANSPARENT



CLOUD HOSTING SERVICES

A 3D paper flower, resembling a ranunculus, is the central focus. It is split vertically down the middle. The left half is a vibrant blue, and the right half is a bright magenta. The petals are layered and folded, creating a sense of depth and texture. A semi-transparent dark grey horizontal band runs across the middle of the flower, serving as a background for the title text.

PROTOTYPE TO PRODUCTION

Purchasing Recommendations

- OLE can respond to RFI/RFP Processes
- We recommend a Prototype Process (Used for Large Complex Systems Purchasing)
 - Develop prototype with our software
 - Test your own data in the environment
 - Limit spending to 10% of your eventual implementation budget (approx 50-60K)
 - Use commodity cloud resources to eliminate startup hardware costs
 - Determine if Kuali OLE is right for you:
 - Community
 - Software





GO FOR IT

ENABLE OPEN SOLUTIONS FOR YOUR INSTITUTION

OLE Costs and Sustainability

Current buy-in: 100k/80k for over/under 20 million in library expenditures

Growth: low = no change (10 partners), mid= 1 new member, high=2 members

	Year Five (2015)			Year Six (2016)			Year Seven (2017)			Year Eight (2018)		
Growth	Low	Mid	High	Low	Mid	High	Low	Mid	High	Low	Mid	High
Income	\$925,000	\$1,012,500	\$1,100,000	\$925,000	\$1,100,000	\$1,275,000	\$925,000	\$1,187,500	\$1,450,000	\$925,000	\$1,275,000	\$1,625,000
Core staff	\$716,239	\$716,239	\$716,239	\$737,726	\$737,726	\$737,726	\$759,858	\$759,858	\$759,858	\$782,654	\$782,654	\$782,654
Marketing	\$18,500	\$20,250	\$22,000	\$18,500	\$22,000	\$25,500	\$18,500	\$23,750	\$29,000	\$18,500	\$25,500	\$32,500
Development	\$190,261	\$276,011	\$361,761	\$168,774	\$340,274	\$511,774	\$146,642	\$403,892	\$661,142	\$123,846	\$466,846	\$809,846
Total	\$925,000	\$1,012,500	\$1,100,000	\$925,000	\$1,100,000	\$1,275,000	\$925,000	\$1,187,500	\$1,450,000	\$925,000	\$1,275,000	\$1,625,000



For more on Kuali OLE:

Visit our website: <http://ole.kuali.org>

See our Test-Drive - <http://kuali.org/test-drives>

Visit GOKb: <http://www.gokb.org>

Follow us on Twitter: [@kualiole](https://twitter.com/kualiole)

Read our Blog at: <http://kualiole.tumblr.com>

Follow us on Ohloh - <https://www.ohloh.net/p/kole>

Contact me at: rhmcdona@indiana.edu

Or Twitter at: [@mcdonald](https://twitter.com/mcdonald)

